

 4  3  3



Kings Road, *Windsor*

OSBORNE HEATH

A four bedroom, three bathroom character home facing The Long Walk in Windsor town centre, with a driveway, west facing garden and no onward chain.

The ground floor has a formal dining room with fireplace, study which can also be used as a double bedroom with the downstairs shower room, and a kitchen with dining area leading out to the garden.

The first floor has a formal living room overlooking The Long Walk, double bedroom, bathroom and an office which could be used as the fourth bedroom.

The top floor has a dressing area, double bedroom overlooking The Long Walk and an en suite shower room.

The front of the house has been block paved and used for parking (please note the curb has not been dropped). There is additional parking for two vehicles to the rear of the house plus the garden is wider than average and faces west.

Kings Road runs alongside The Long Walk to Windsor Castle, in the popular Golden Triangle area of Windsor town centre. Windsor has a wide range of shops and restaurants as well as the Castle, Great Park, Racecourse and Legoland. Nearby train stations include Windsor & Eton Central and Windsor & Eton Riverside where trains run to London Paddington (via Slough) and London Waterloo. Windsor is also convenient for the M4, M25 and Heathrow Airport.

Council Tax band G.

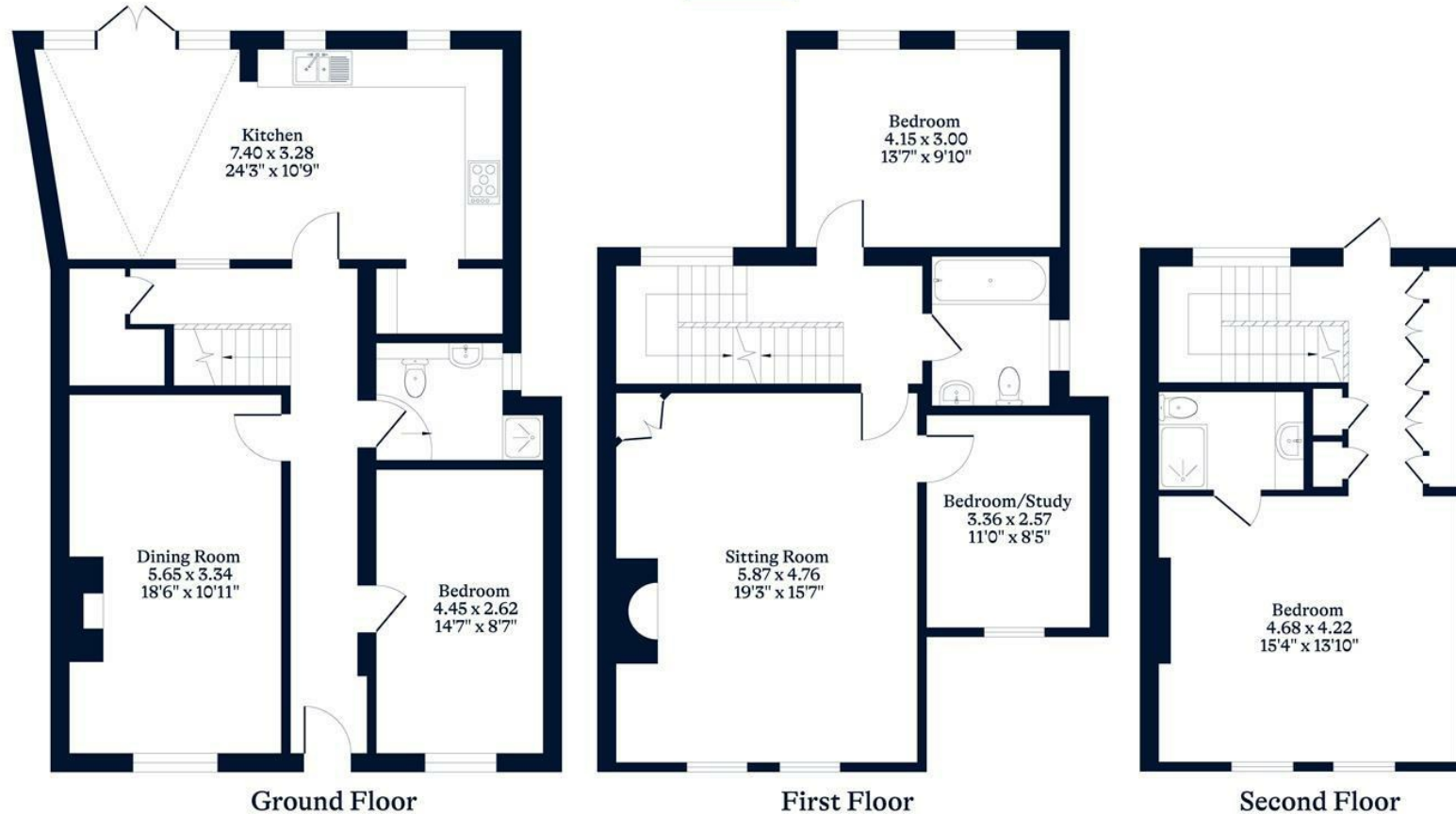




APPROXIMATE FLOOR AREA
House - 182.80 sq m - 1968 sq ft
(Gross Internal Area)



NOT TO SCALE
This plan is for illustration purposes only



OSBORNEHEATH.CO.UK

This floor plan has been created by Property Shoot Ltd following the RICS code of measuring and is for indicative guidance only. Whilst every attempt has been made to ensure the accuracy of the floor plan contained here, measurements of doors, windows and rooms are approximate and no responsibility is taken for any error, omission or misstatement. Details shown on this floorplan, including all measurements, areas and proportions cannot be guaranteed by either the provider or estate agency and should not be relied upon.

©PROPERTYSHOOT